



GMT MONTHLY MEMBERSHIP PROGRESS REPORT

Results as of: 6/30/2018

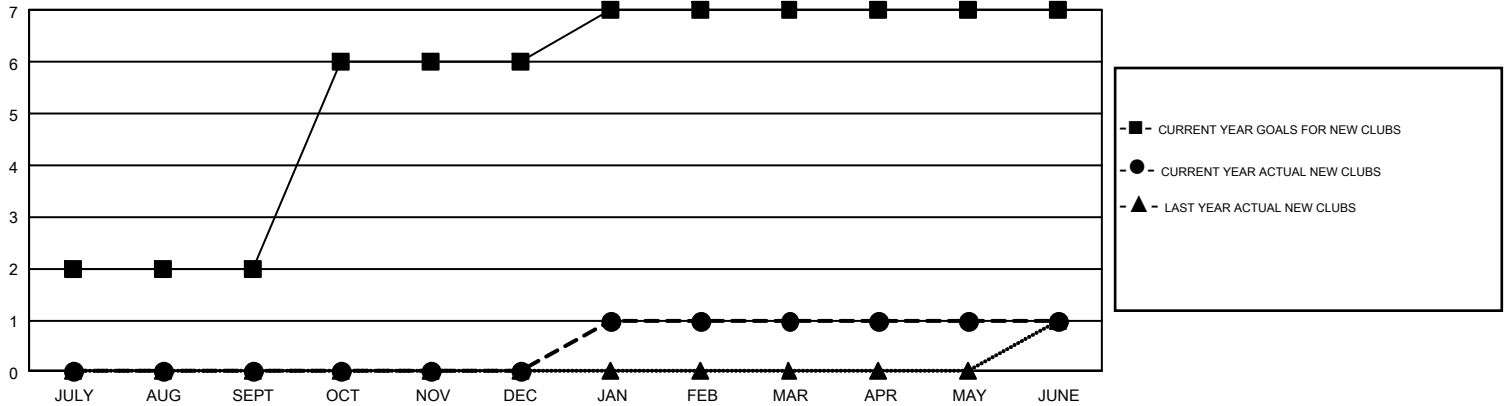
GMT Constitutional Area 7, Group B

GMT: CLIFFORD HEYWOOD

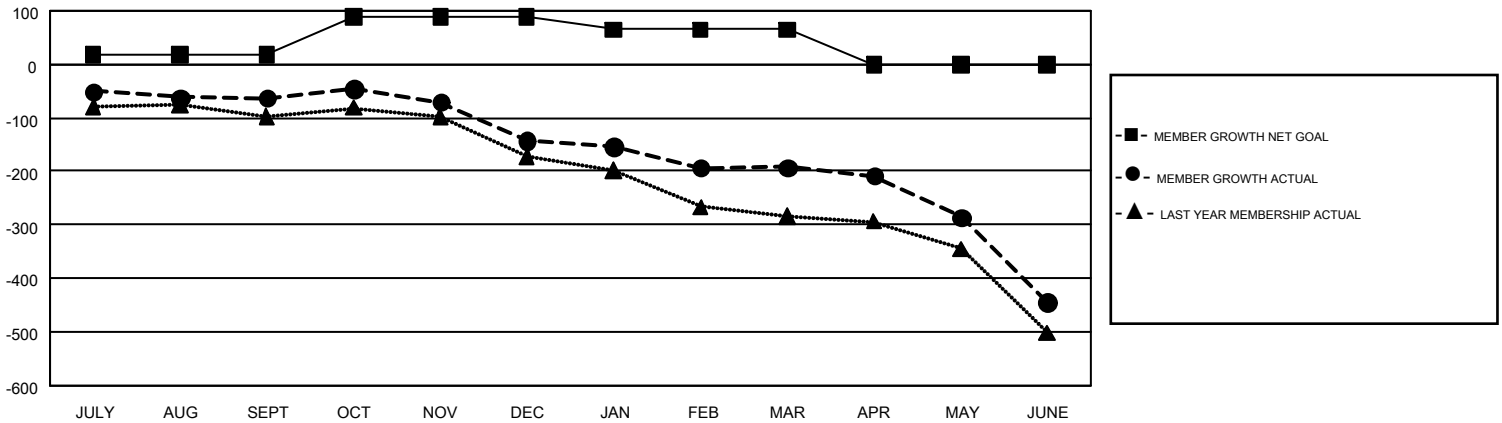
REPORT DOES NOT INCLUDE CLUBS IN UNDISTRICTED AREAS.

Clubs				Members			
RESULTS FOR 2017-2018				RESULTS FOR 2017-2018			
QUARTER	NEW CLUB GOAL	NEW CLUBS	DROPPED CLUBS	QUARTER	MEMBER GROWTH NET GOAL	MEMBER GROWTH ACTUAL	DROPPED MEMBERS ACTUAL (including transfers)
JULY/AUG/SEPT	2	0	4	JULY/AUG/SEPT	18	209	235
OCT/NOV/DEC	4	0	0	OCT/NOV/DEC	71	220	264
JAN/FEB/MAR	1	1	3	JAN/FEB/MAR	-24	180	196
APR/MAY/JUNE	0	0	4	APR/MAY/JUNE	-65	352	541

GOALS AND ACTUAL NEW CLUBS CUMULATIVE



GOALS AND ACTUAL MEMBERS CUMULATIVE



DROPPED CLUBS: 11	254 CLUBS OF 362 ADDED 1 OR MORE NEW MEMBERS	GENDER DISTRIBUTION MALE 6,598 (69.83%) FEMALE 2,850 (30.17%)
DROPPED MEMBERS DECEASED 148 CLUB CANCELLED 20 OTHER 1,068 TOTAL 1,236	CLICK HERE FOR CUMULATIVE MEMBERSHIP DATA	TOTAL FAMILY UNIT MEMBERS 0 FAMILY MEMBERS PAYING HALF DUES 0